

A BRAND OF:  grupo RIOFRIO

 ATLANTIDA
HOMES
INDUSTRIALIZED CONSTRUCTION

EDITION 01/ 2025

The home you desire
with the service you deserve



About AUS

Atlántida Homes is the industrialized construction division of Grupo Riofrio. We believe in industrialized construction and have been pioneers in developing these construction techniques.

We have our own structure that includes all necessary departments for the full manage of real estate development. Our team includes an architectural office, real estate development, construction management, and retail. We handle everything from land investment to the delivery of the finished product, including marketing and after-sales service.

Our multidisciplinary team allows us to approach every projects with a comprehensive 360-degree perspective, leading to the development and patenting of the Atlántida Homes industrialized construction system.

Atlántida Homes was founded with the goal of delivering the highest quality and providing the complete service our clients demand: Quality construction homes with turn-key service, full finished, equipped, and ready to move in.

We aim to adapting self-promotion houses to the time we are living, eliminating all the inconvenience of searching for different professionals for each task and step required to successfully complete the project.

A concept of industrialized construction houses covering all the needs of modern homeowners seeking a custom house, trusting in a single agent without the hassle of dealing with multiple professionals.

Our team of architects and specialized engineers offers the solution to ensure fast construction tailored to your needs.

EXCELLENT SERVICE, DEADLINES, HIGH-QUALITY STANDARDS, AND EXCEPTIONAL DESIGN is what you will find at Atlántida Homes.

Why choose ATLANTIDA HOMES?

SUSTAINABLE HOUSES

We incorporate the latest and most innovative technology that contributes to minimize energy consumption and promote environmental sustainability.



TURNKEY HOUSES

We accompany you throughout the entire process. We develop the best design for you, take care of the necessary permits, and deliver the house and plot fully finished. Everything will be under control so you can enjoy the experience with complete peace of mind, always with the guidance of an architect.

CUSTOM-DESIGN

We design our homes with our clients in mind, emphasizing aesthetic exteriors and functional interior layouts.

CONSTRUCTION QUALITY

We guarantee the reliability of our product through rigorous quality control during the construction of our homes, relying on trusted materials and a vast team of professionals specialized in various fields.



PERSONALIZE YOUR HOME

We offer a wide selection of materials and finishes, partnering with leading brands to design a truly unique home.

10 YEARS GUARANTEE

So you can enjoy your home without worries



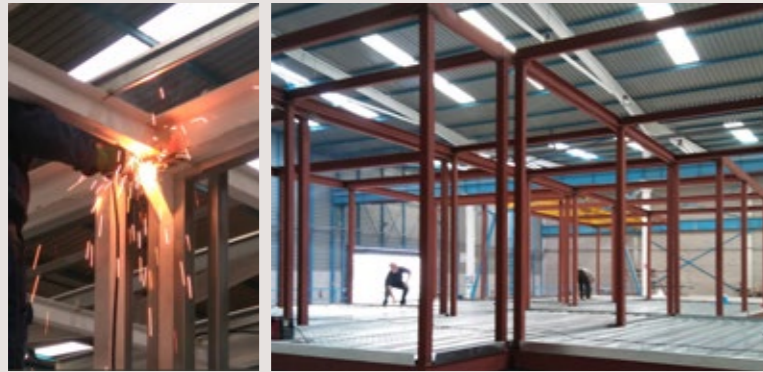
THE FASTEST SYSTEM

The construction system is the fastest on the market, making it the best option for cost control and avoiding the unforeseen issues common in traditional construction due to process delays.

FIXED PRICE

You can lock in a fixed price for your home before beginning the construction process.

STEEL structure



The main structure consists of steel columns and beams and reinforced concrete slabs. This system combined with the connection of independent modules, provides strong resistance to earthquakes and a higher stability than traditional construction.

This structure not only provides exceptional strength and resistance but also takes up less space, minimizing annoying corbels and maximizing the useable area of the home.

multilayer facade

Our house facades feature a self-supporting construction system made from steel profiles, with multiple layers encasing the structure to ensure a fully airtight and watertight environment. This type of facade offers high durability along with excellent thermal and acoustic insulation for the home.

Unlike traditional construction facades, this construction system requires less surface, reduces construction times by third and reach home's insulation efficiency doubles.



CONCRETE foundations

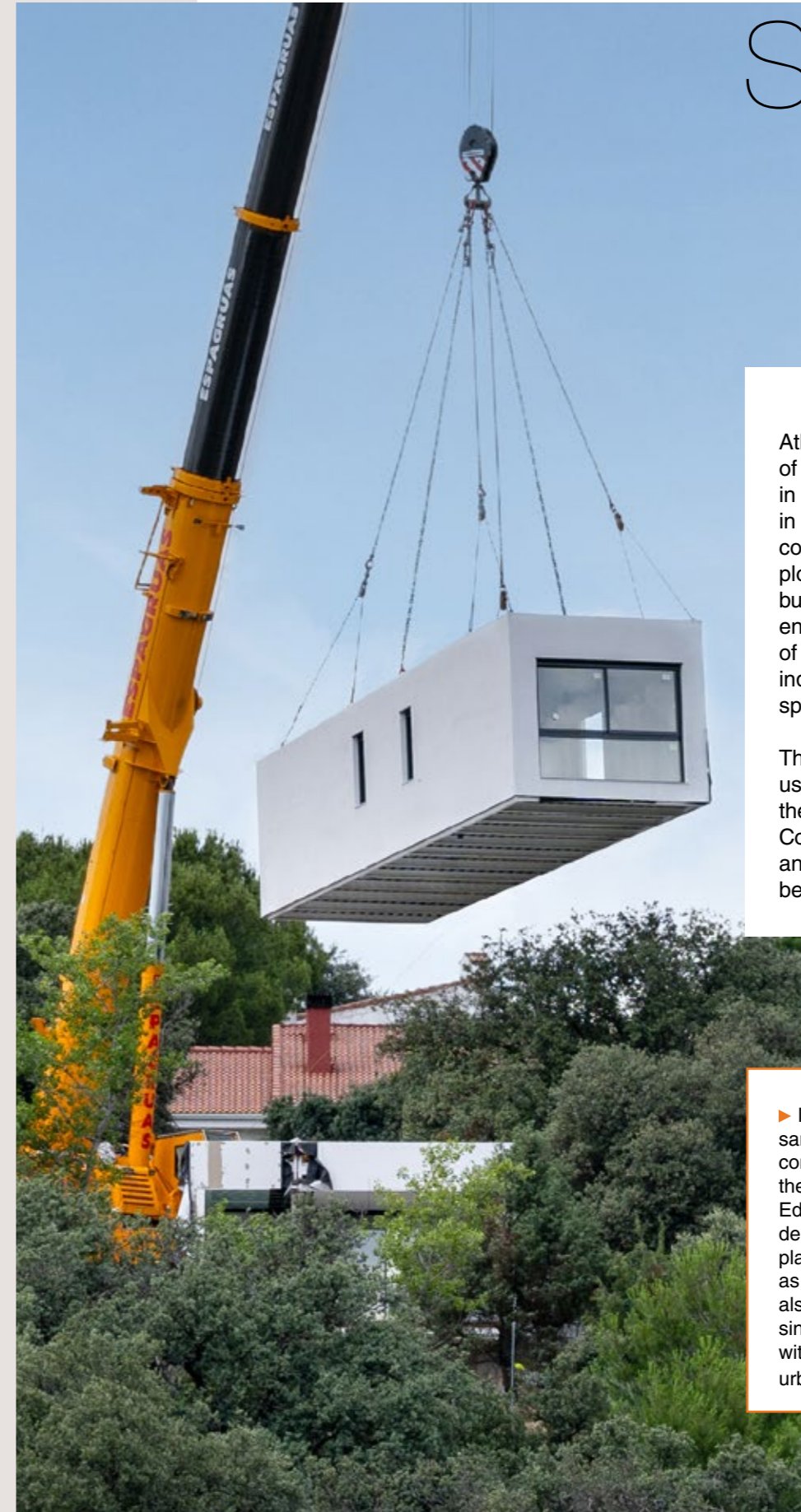


We do a ground study for each plot, to determine the most suitable foundations. Under normal conditions and medium capacity soil, we build foundations with reinforced slabs or isolated reinforced footings. In addition, we incorporate concrete walls and a drainage system around the house to prevent infiltrations of subsurface water from the ground from coming in contact with the house.

Industrialized houses with steel structures and dry partitions, permit more flexibility in the design of interior spaces. Having lower structural limits, these houses can be refurbished if the client needs them in the future, without important works.



OUR CONSTRUCTION SYSTEM



Atlantida Homes is committed to a type of industrialized construction based in the production of 3D modules built in a factory. Once the modules are completed, they are transported to the plot, and installed onto the previously built foundations. This methodology ensures greater control of the quality of the process, as it is supervised by independent technicians, specialized in specific areas.

This kind of construction is carried out using dry systems and in two places at the same time (the factory and the plot). Combined with innovative technology and materials, this approach as a result better-built homes in less time.

¿did you know...?

► Industrialized houses are subject to the same legal requirements as traditional construction. Both must comply with the L.O.E. (Ley de Ordenación de la Edificación) and the C.T.E. (Código Técnico de Edificación). They require the same planning permissions and council licenses as traditional buildings. Mortgages can also be obtained for industrialized houses since they are anchored to the ground with foundations and connected to existing urban facilities.

At Atlantida Homes, we develop an efficient energy analysis for each house to provide the best short and long term solutions. Our goal is to maximize primary energy efficiency while minimizing CO2 emissions. Aerothermal systems, combined with heating and cooling radiant floors, are the most popular and efficient choice. They offer a sustainable solution with high energy efficiency and cost-effective installation. This aligns with the appropriate design criteria, are essential for achieving the highly sought-after energy savings.

A save with aerothermal system

This system is installed to provide cooling in summer, heating in winter, and domestic hot water (DHW). The aerothermal system generates energy using heat pumps that extract ambient energy from the air through a thermodynamic cycle, which helps reduce electricity costs. Additionally, for enhanced comfort, this system can be oversized to supply heat to the air conditioning heat pump.

underflooring heating

All Atlantida Homes include a water underfloor cooling and heating system. This technical solution ensures, heat distribution homogeneously ensuring optimal thermal comfort in every room of the house. In addition, the heat or cold generated is stored in the different walls thanks to the thermal inertia of the materials, maintaining a consistent temperature and a constant thermal sensation with minimal energy consumption.

double insulation skin



Our facade system consists of multiple layers that envelop the house, functioning in a way that prevents any energy loss. This, combined with the air chamber (crawl space) between the house and the ground, provides double the insulation compared to traditional homes.

HIGH STANDARDS WINDOWS

To incorporate large windows into our designs while ensuring comfort, we use advanced technology for our exterior timbers: uPVC window frames featuring several insulating chambers and double-glazing security glass.

Window shutters and other shading elements, such as pergolas and adjustable slat panels, provide control over solar incidence as needed. At Atlantida Homes, we offer the best solutions for your project, ensuring they blend in harmony with the facade's aesthetic.

Efficient houses



OWN STYTLÉ



We help you decide

A range with the latest finishes on the market is put at your disposal to make your task easy, but you are not obliged to stick to it.

Our houses have no limits. We adapt all our projects to each family and site, so with the help of our team we will make your dream home come true.

TAKING CARE TO DISTINCTION

Usually, in the industrial housing sector, production systems are prioritized... sometimes leaving out some aesthetic details because are works linked to other businesses and professionals.

At Atlantida Homes, we look to bring quality in every aspect, making the most of our multidisciplinary team to maximize the benefits of industrialization without refusing carefully crafted interior design.



More than wardroves

We design bedroom layouts to maximize storage capacity while ensuring seamless integration with the overall furniture arrangement. But Wardrobes can do more than just provide storage—they offer the perfect solution for maintaining a clean and organized space. With our expert designs, you can make the most of every room in your home.



Focusing more on house surfaces and giving less importance to decorative elements is trendy, which we do not overlook. Textured finishes, natural textiles, and porcelain paints go beyond aesthetics, creating immersive spatial experiences.





OPEN KITCHEN

Increasingly more people are seeking open-plan living space, combining kitchen and living room, creating a social living space to enjoy with family and friends, while still allowing for separation when needed. This often translates into large sliding doors, strategically placed in the room to obtain the desired functionality.

At Altantida Homes, we have prioritized these considerations from the very beginning of our project. We believe that the right design can enhance your home's character while also ensures practicality. Whether you prefer a traditional style, an elegant touch, or a unique design, our architects will help bring personality into your home. We are committed to crafting unique spaces that reflect your vision.



NATURAL LIGHTING

In all the designs we develop for our clients, the solar study plays a fundamental role.

A well-thought-out design takes into account the orientation of the house, the distribution and size of windows, and the placement of porches to maximize (or regulate) natural light throughout the day. This is crucial for improving indoor air quality, reducing energy consumption, and creating a more comfortable, healthy, and pleasant environment.





unique bathrooms

Transforming bathrooms into spaces for wellness and self-care is a key element in most of our clients' projects. Collaborating with partners who provide tailored and customized products, and a wide range of finishes and designs is essential for achieving exceptional design and showcasing our high quality services.





Integrated exteriors

One of the advantages of building your own home is that it doesn't have to end at the edge of the building, but can extend outward and blend with its surroundings. That's why we provide landscape consulting to ensure that gardening, paving, lighting, pools, and fencing align with the overall design, adding even more value to your project.

A well-thought-out landscape design is essential to giving the home coherence and character, creating a unique and harmonious environment.





The first step is to analyze the plot where the house will be built. We start with a topographic survey to determine the volume and orientation of the house, considering sunlight. We continue developing the design with an urban planning study to ensure that the building meets all regulatory and aesthetic requirements of its surroundings.

Finally, we conduct a logistical study to analyze technical aspects, define the house's modular structure, and determine necessary interventions at the plot's access points. We conclude with a geotechnical study to establish the appropriate foundation type required.



Building permit achieved!

1. SCHEME DESIGN

Once the overall design is defined, we will begin preparing all the necessary documentation for the administration to issue the construction permit. As your representative, we will manage all procedures, respond to requests, and oversee the process, allowing you to focus on other priorities worry-free.

2. BUILDING PERMIT

3. PERMITS IN PROGRESS WORKING AND TENDER DOCUMENTATION



Once we have submitted all the documentation to the town hall, our team of architects will start working with you to define every detail of your home, including the kitchen layout, choice of finishes, lighting design, and landscaping of the plot.

In parallel, our technical department handles the structural and installation calculations required for the house design, as well as the development of all technical documentation needed for both the factory and construction site.

This is how a house is built at ATLANTIDA HOMES



Once the project is complete and the building permits are obtained, we assess the costs of all construction work and establish a fixed budget with the client. Once this phase is complete, we get started! The house is constructed in the factory while foundation work on the plot proceeds concurrently, ensuring that when the house is ready, its foundation is fully prepared for installation.

Once the house is in place, we complete the finishing touches and urbanization work to deliver a fully finished house.

4. HOUSING MANUFACTURING



installation



5. WORK IN PLOT



The house is yours

We finalize all the procedures with the town hall, ensure you can arrange utility services, and carry out the commissioning of the house. Ready for you to move in with full guarantees.

Explore our
brand-new **online**
catalog



www.atlantidahomes.com

or ask for a
customized
ATLANTIDA
HOMES



Aral



Enea



Era



Terra



Landa



Senda



Vega



Tundra



Ónice



Aura



Cala



Duna



Atlas



Delta

and more...

Come and SEE US

If you need help, want more information or just want to meet us, you can come to our offices to see us and make an appointment so that we can show you some of our model homes.

We have a showroom with samples of the finishes and technical details so you can see and touch everything before deciding how you want your new home to be.

We will explain the process in a more detailed way and our technical team will be able to advise you on the house that best suits your needs and the plot on which it will be located.

In addition, you will know first-hand both the most technical details and all the possibilities that an Atlántida Home offers you.

www.atlantidahomes.com


hola@atlantidahomes.com

91 409 71 80

CENTRAL OFFICES:
C/ Pez Austral nº2
C.P. 28007, Madrid

* The photographs included are of real projects by Atlántida Homes.
However, all the information in this document is for informational purposes only and is not binding or contractual.

ATLANTIDA HOMES

 grupo RIOFRIO

