



Modular designs





About us

Atlantida Homes was born with the aim of adapting single family home construction to the time in which we live in, while meeting the current needs of buyers. Thus becoming the highest quality and energy efficiency division of Grupo Riofrío, a company with more than 60 years of experience in the real estate sector.

We build homes with the highest quality standards, using reinforced concrete and steel columns as it's done in skyscraper construction.

The entire construction process is tested and factory built, which allows us to have the maximum level of precision and an industrial-level quality control.

We have:

Own team of architects and engineers

For the development of projects with the utmost rigor, making the difference in terms of design and quality.

Wide range of finishes

We bet on leading brands, but products from multiple manufacturers are offered our customers so that they can decide for themselves.

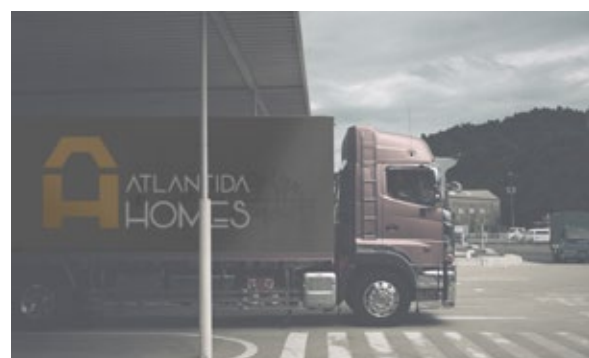
Real estate advice

By belonging to a developer group, we have extensive knowledge of the entire construction sector, as well as market prices and what makes something a good investment.

Why choose ATLANTIDA HOMES?

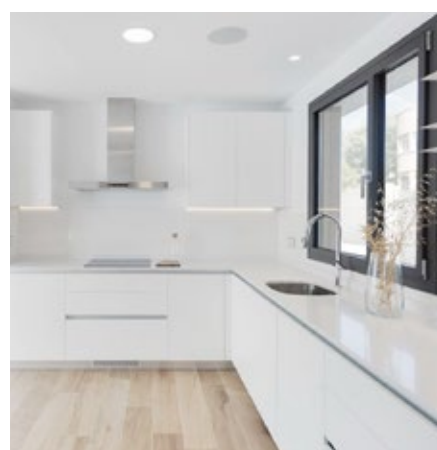
10 YEARS WARRANTY

So you can enjoy your home without worries.



FASTER MEANS EASIER

We are with you throughout the whole process; from choosing the home that best suits you, to its personalization and turnkey delivery, in 4 months (*).



DESIGN

Our homes are designed with our costumers in mind, taking care of the exterior aesthetics and the interior layout.



CONSTRUCTION QUALITY

The reliability of our homes is guaranteed through rigorous control during the construction process and rely on trusted brands for high quality finishes.

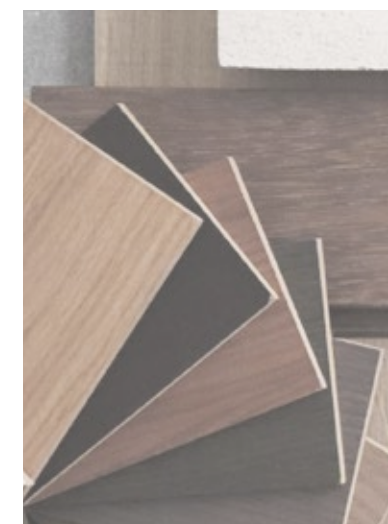
FIXED PRICE

You will know house final price before start constructing.
No surprises!



PERSONALIZE YOUR HOME

A wide range of top brand finishes is put at your disposal, so that the home can be adapted to your preferences.



EFFICIENT HOUSEHOLDS

The latest technology is offered to reduce energy consumption and take care of the environment.

FIBER-REINFORCED CEMENT facade



The house facades are made up of a rigid self-supporting system, made with steel profiles and fiber-reinforced cement panels. These panels provide great resistance as well as high thermal and acoustic insulation performance.

Unlike a traditional facade, this system **reduces the execution time by a third and doubles the insulation layer.**

The main structure is composed of **steel columns and beams with reinforced concrete slabs.**

With this solution we provide great resistance to earthquakes, and **greater rigidity** than traditional construction.

This type of structure, in addition to offering great resistance, takes up less space and manages to eliminate inefficient shelves and increase the useful surface of the home.



STEEL structure



SUSPENDED floor slab

Suspended floor slab, composed of steel beams and reinforced concrete, rises from the ground to generate an air chamber that serves as **thermal insulation and protects us from the moisture of the ground.**



Industrialized structures allow greater flexibility in the design of the spaces within the home. With little to none architectural restrictions, **these homes can be remodeled at any time without any major efforts.**

CONCRETE foundation

We carry out a geotechnical study of each site from which **we calculate the appropriate foundation.** Under regular conditions and medium consistency terrain, the foundation is cast in place slabs or braced isolated concrete footings. In addition, if a basement is requested, it is built with concrete walls and the appropriate waterproofing and drainage systems.



our CONSTRUCTION SYSTEM



Our homes are built similarly to larger structures, using **reinforced concrete and steel columns.**

The industrialized construction is carried out in a factory, which allows more quality assurance. In addition, it has a Document of Suitability for Use (DAU), and its code compliant just like traditional construction. And for greater assurance, the entire process is supervised by independent technicians.

The dry construction process used enables a faster erection of the structure as well as a watertight solution where thermal bridges are avoided. Energy efficiency is taken into account both during construction, by reducing waste, and later on by reducing the energy consumption.

This, together with the use of more innovative technology and materials, results in stronger, higher-performance houses built in less time.

— did you know?

- ▶ Modular homes are considered the same as traditional ones in legal terms. They both have to meet all the requirements of the LOE (Building Planning Law) as well as the CTE (Technical building Code) and are required the same permits and licenses. Also, mortgages can be taken out on modular homes just like with any traditional home.

Discover our
on-line
catalogue

Or we can design
**ATLANTIDA
HOMES**
*to tailor
your needs*

www.atlantidahomes.com



Duna



Ónice



Aral



Delta



Vega



Cala



Tundra



Aura



Cima



Enea

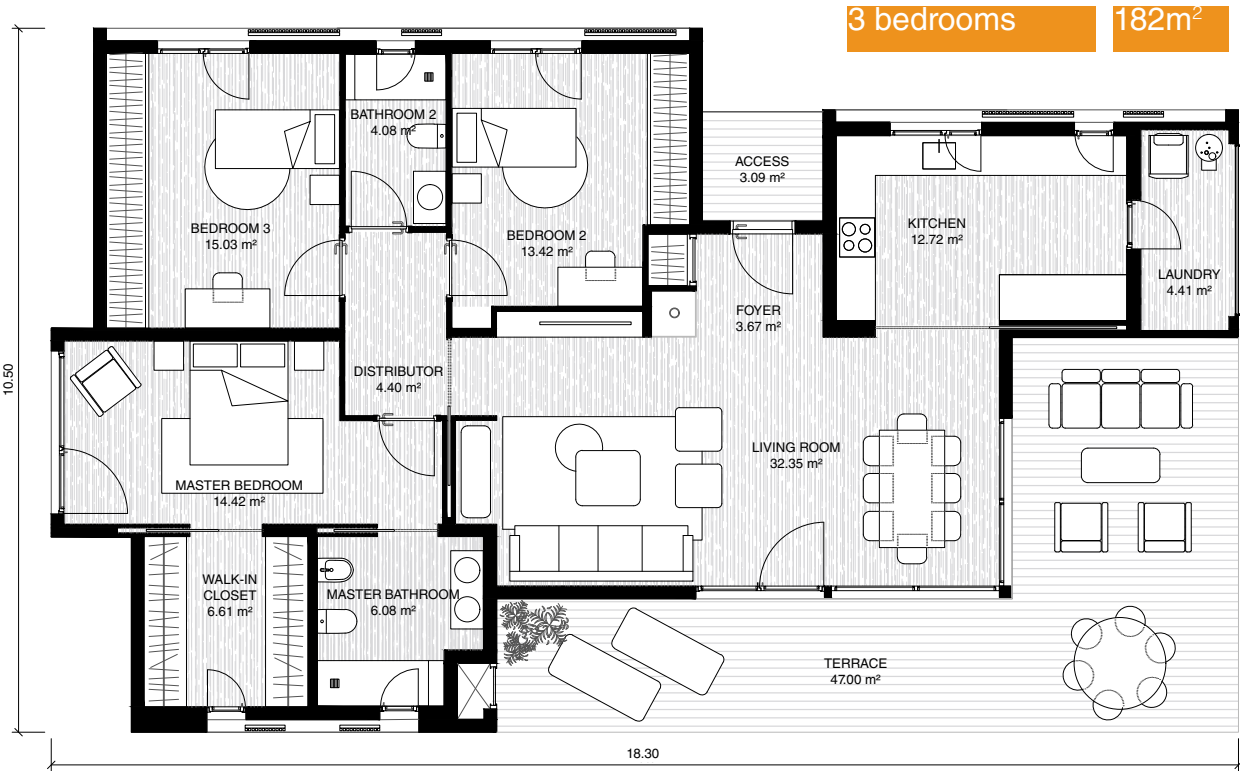


Atlas



Senda

and many more...

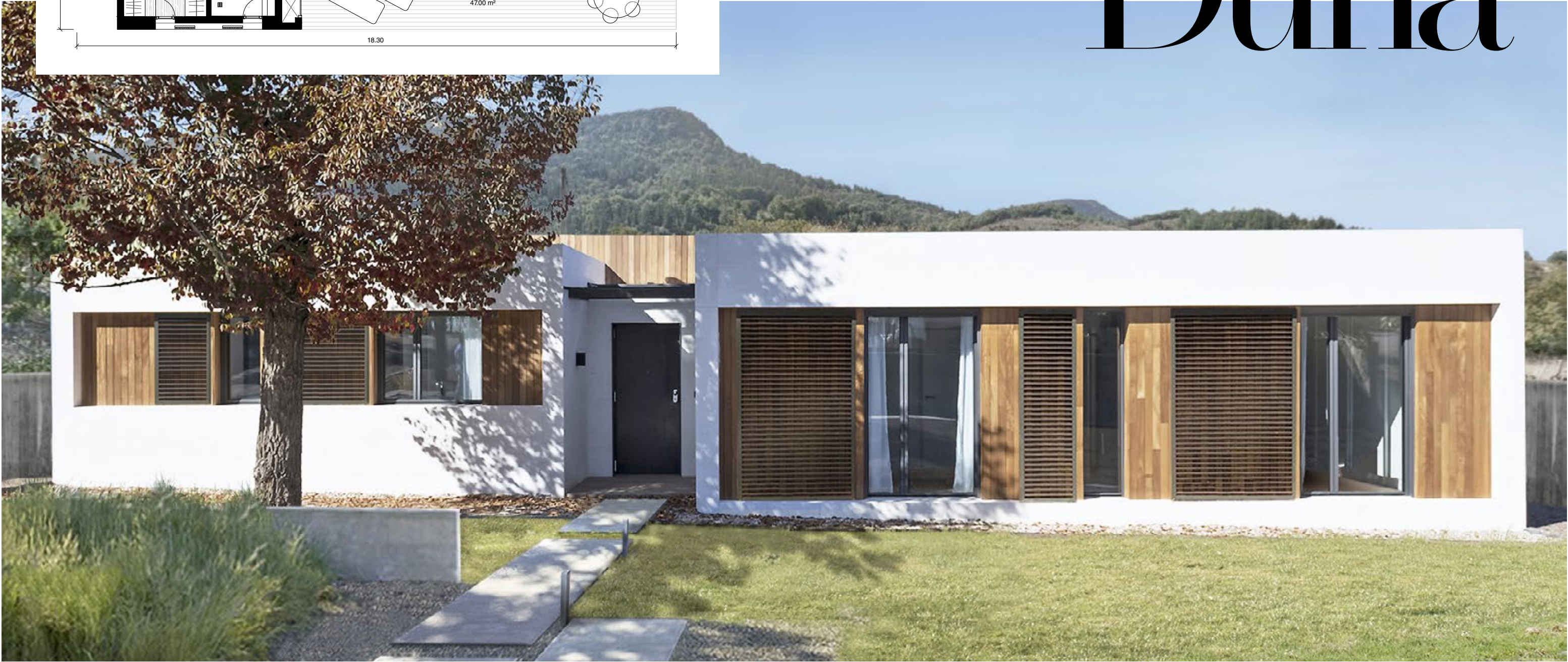


AVAIALE WITH

- > 2 Bedrooms - 160 m²
- > 3 Bedrooms - 182 m²
- > 4 Bedrooms - 228 m²

*Perfect balance between
design and functionality*

Duma

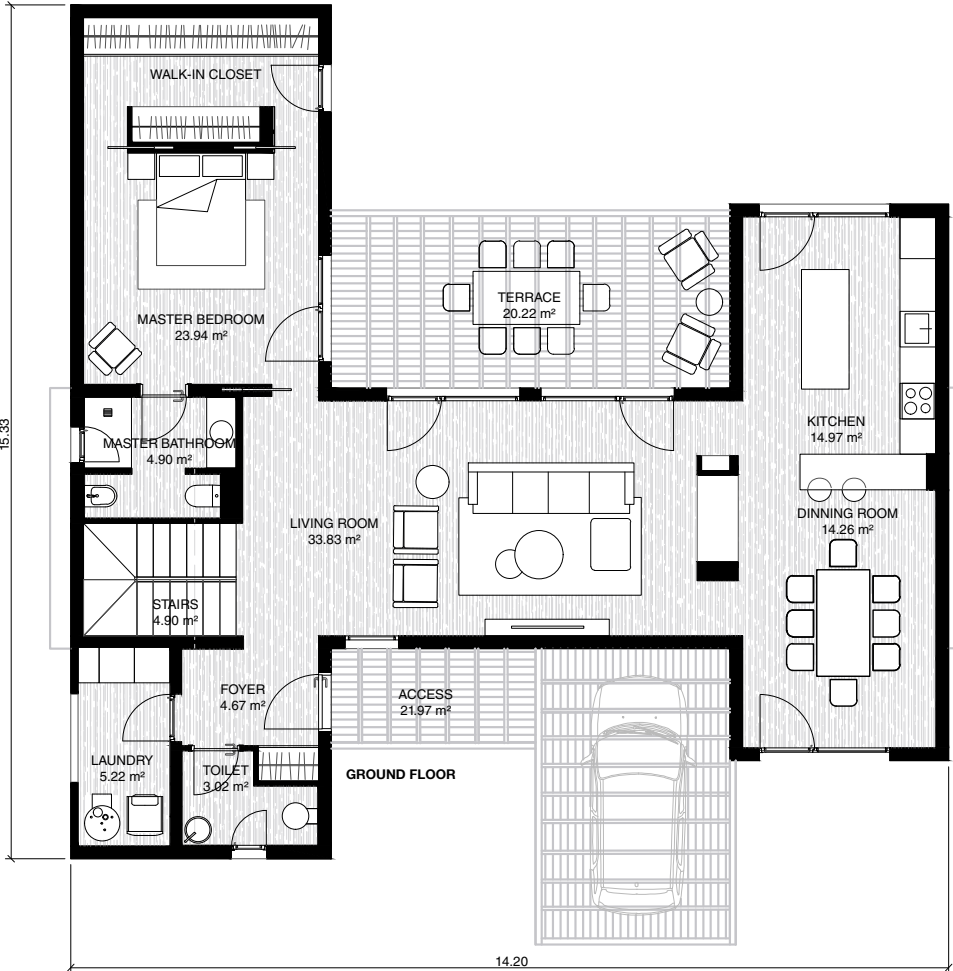
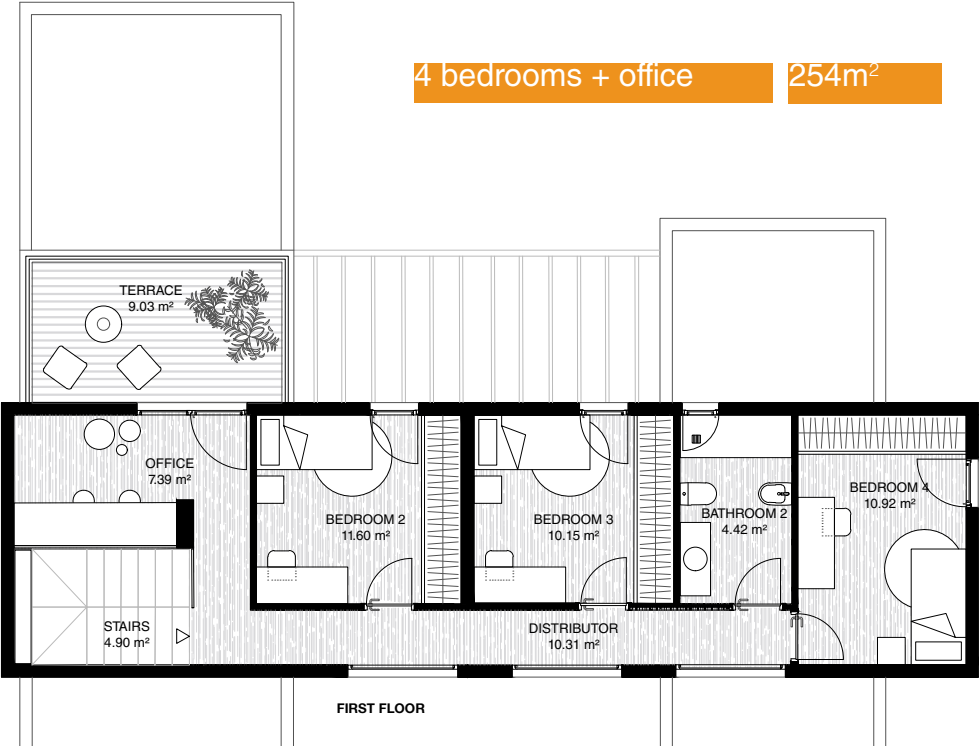


AVIAABLE WITH

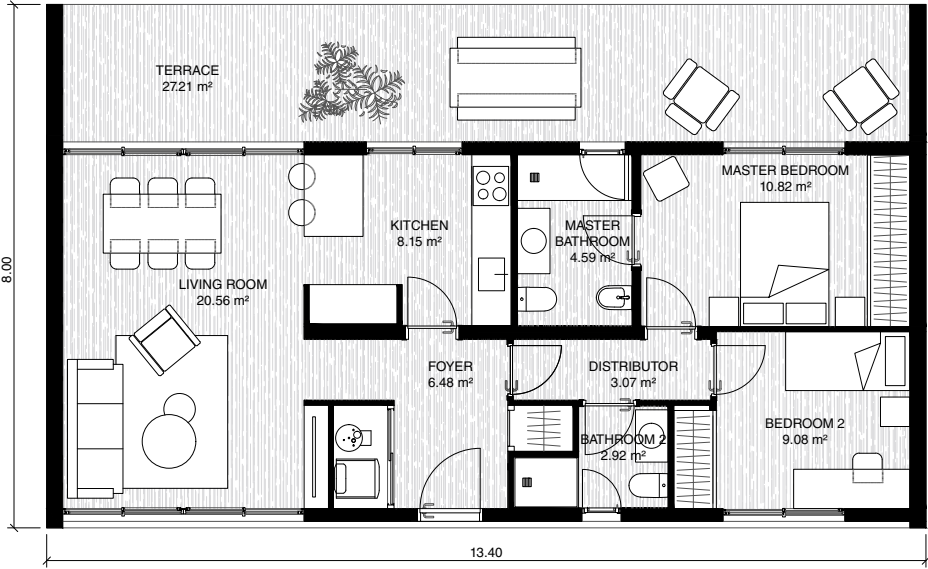
- > 4 Bedroom + office - 254 m²
- > 4 Bedroom + 4 bathr. - 254 m²

Ónice

Suggestive lines. A warm interior, achieved with a large space.



2 bedrooms + terrace | 108m²



Comfort of compactness in the vastness of the outdoors

Aura



Delta

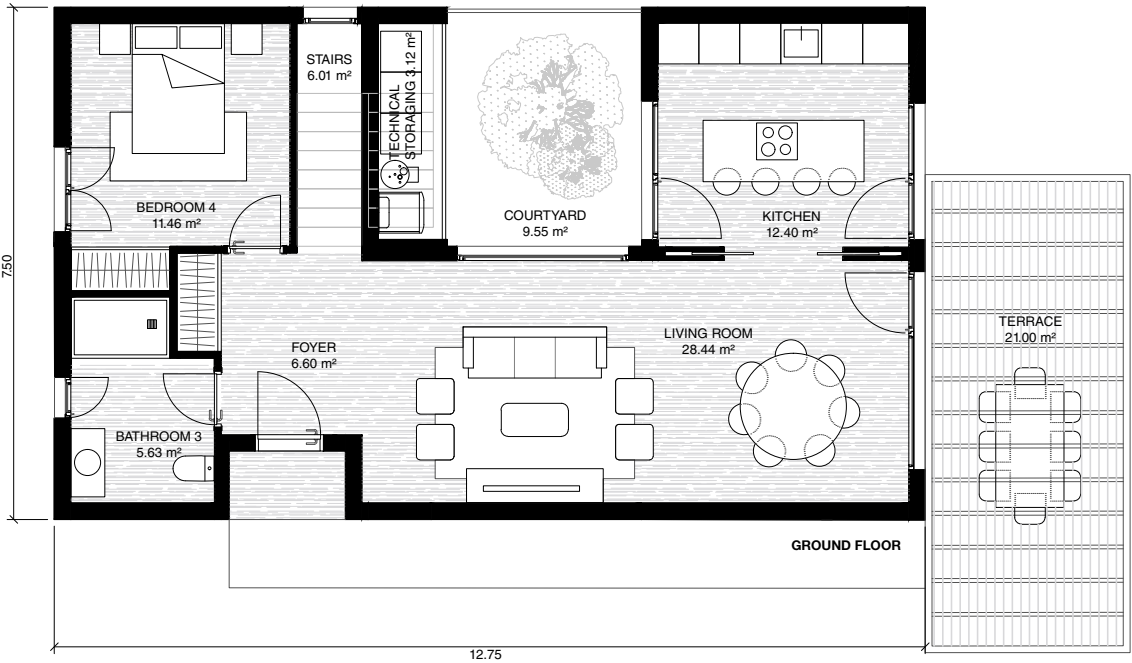
*Like part of the family,
your garden inside your home.*



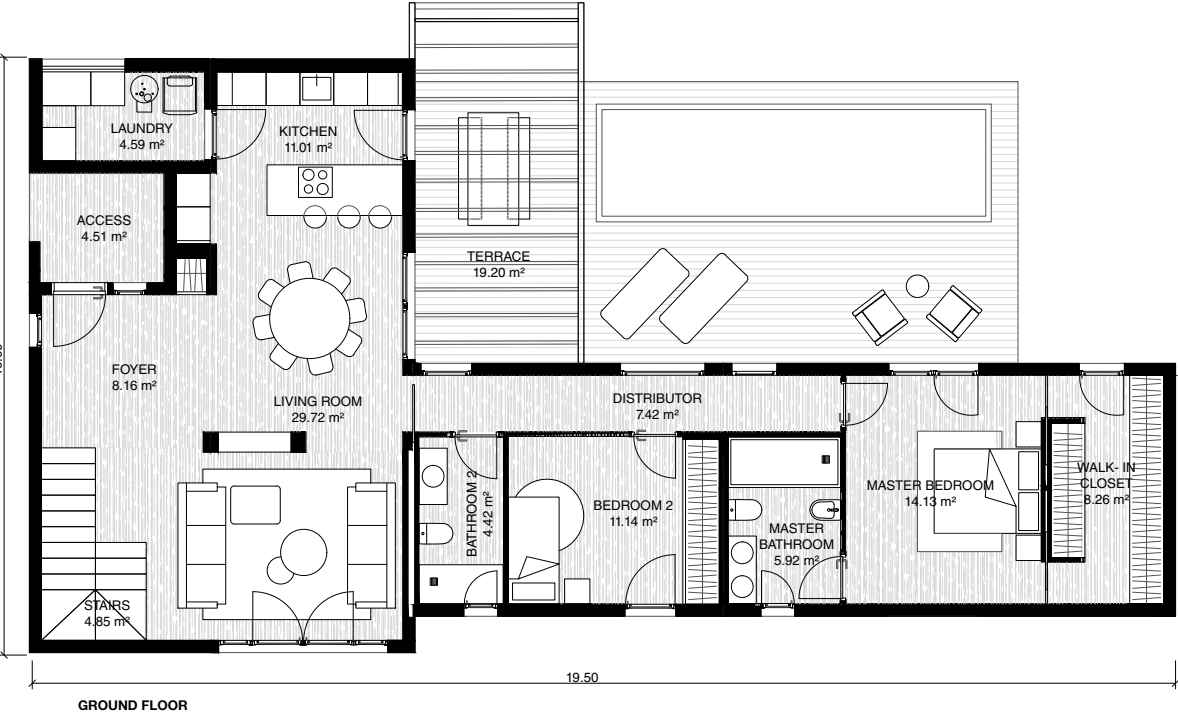
AVAILABLE WITH

- > 4 Bedrooms - 207 m²
- > 3 Bedrooms - 207 m²
 - + office
 - + laundry

4 bedrooms 207 m²



AVAIABLE WITH
> 4 Bedrooms - 227 m²
> 5 Bedrooms - 240 m²



All the light and expanse that you were waiting, at your fingertips

Vega



Always perfect.
For any family, anywhere.

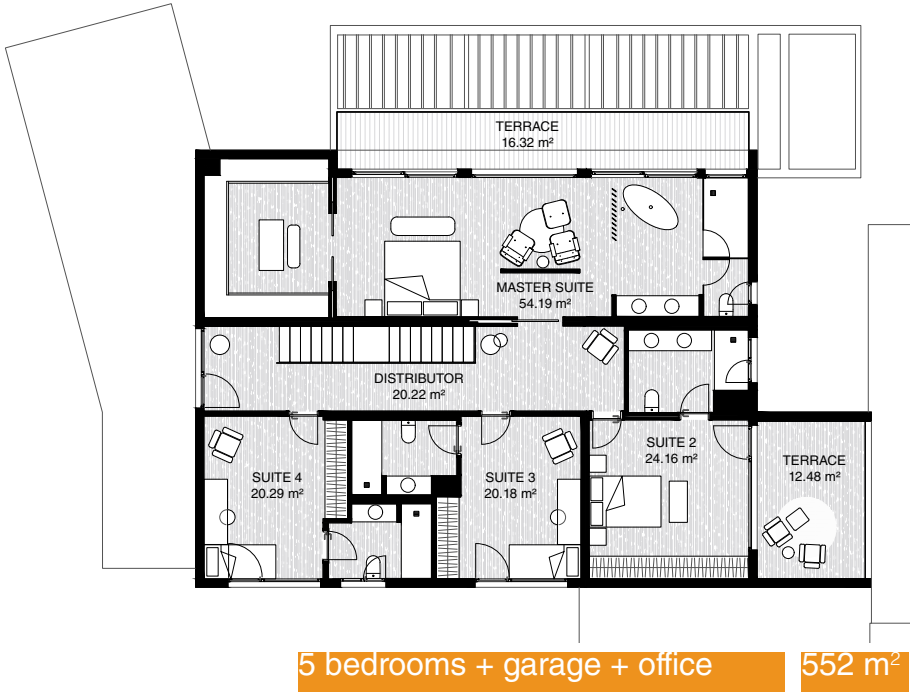
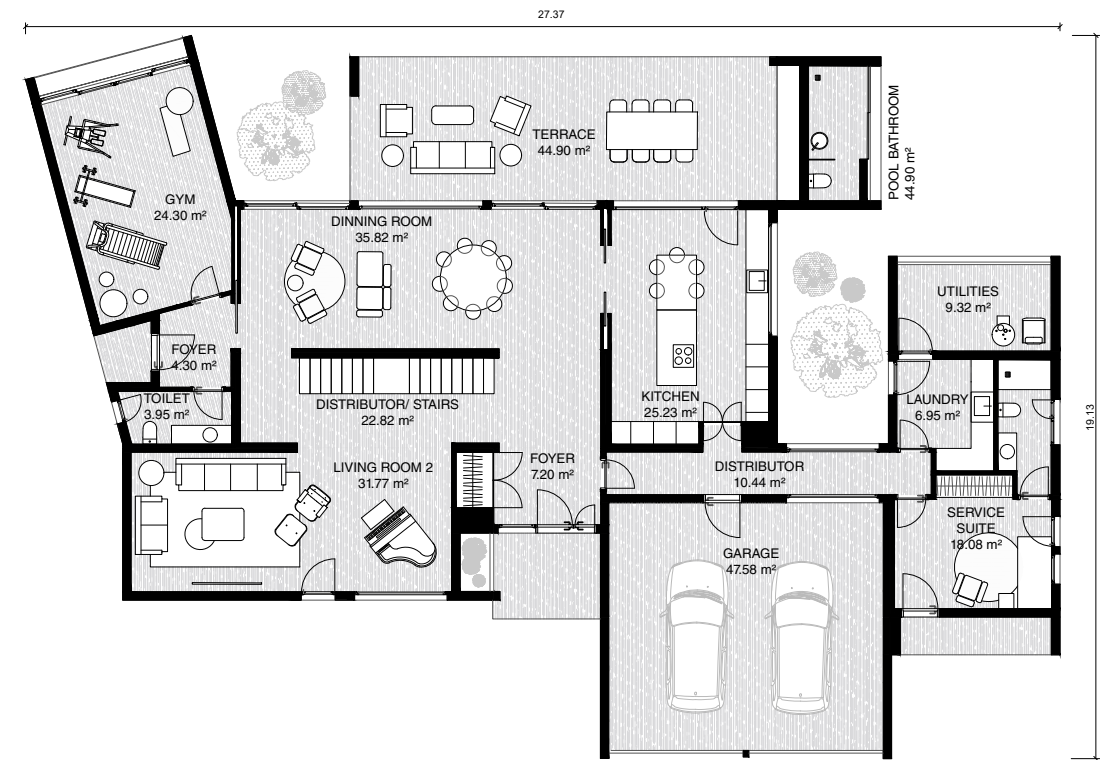
Tundra



AVAIABLE WITH

- > 2 Bedrooms - 144 m²
- > 3 Bedrooms - 165 m²



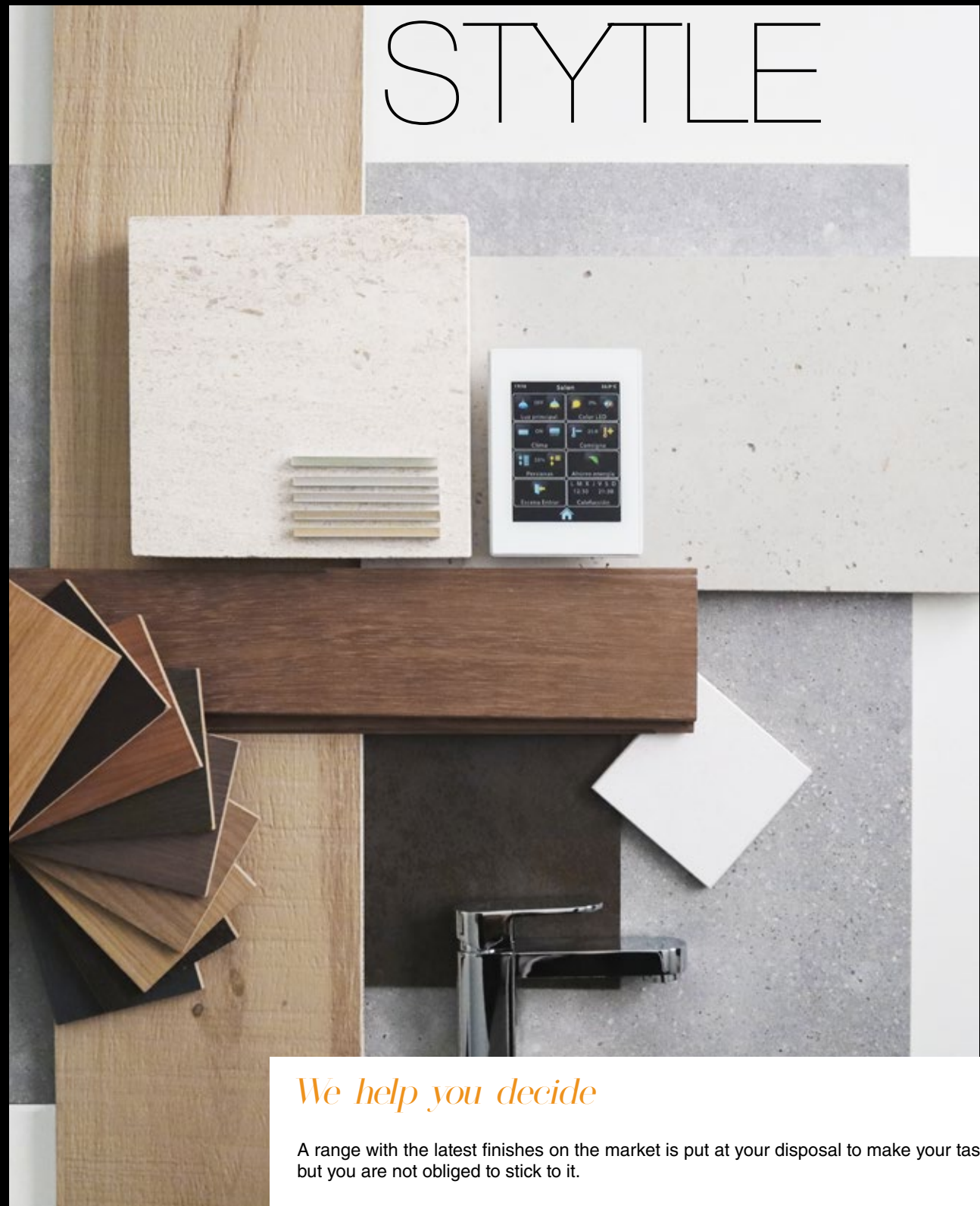


Everything you want,
in the way you need.

Aral



OWN STYTL



We help you decide

A range with the latest finishes on the market is put at your disposal to make your task easy, but you are not obliged to stick to it.

Our houses have no limits. We adapt all our projects to each family and site, so with the help of our team we will make your dream home come true.

solar panels

We can include photovoltaic or solar panels on the roof, which help heat the water both for consumption and for heating (*).

save with aerothermal...

This system is used to heat or cool the water used in the living unit. Energy is generated from heat in the air and with very little electricity consumption. Its high performance allows savings as **20% compared to a conventional gas boiler**.

In addition, this system can also be used for air conditioning.

...or geothermal

Energy consumption can further be improved by installing this system. It consists on the direct use of geothermal energy for some heating or cooling applications. This **100% renewable energy source allows savings of more than 45% compared to conventional gas boilers**.

radiating floor

All ATLANTIDA HOMES are designed to provide radiant flooring. This feature allows savings between 15% to 20% in relation to traditional radiators given the more homogeneous distribution of heat throughout the space. When coupled with suspended slabs, this becomes an optimal solution for insulation and energy efficiency.

(*) Aerothermal or geothermal could make PV panels not necessary in some municipalities.

envelope with double insulation

A traditional brick facade has a thermal insulation of 6 cm thick. Our homes are designed to include 12 cm of mineral wool insulation in addition to an air chamber that facilitates a thermal break. Our facade system prevents the transfer of heat both in winter and summer, ensuring a comfortable interior environment at all times. Its low thermal inertia system facilitates a rather quick cooling or heating of the home despite the exterior climate conditions.

- gypsum boards
 - Steel stud frame with 6 cm mineral wool insulation
 - Air chamber
 - High resistance steel stud frame with 6 cm mineral wool insulation
 - Fiber-reinforced cement panels
 - Facade finish
- Our system allows to finish the facade with any material. Single layer plaster, wood, natural stone, ventilated facade, porcelain, etc.

high tightness and insulation windows

Your Atlantida home will not lack luminosity. Large facade openings are approached with aluminum double panel laminated glass windows ensuring interior comfort by providing an efficient thermal break.



EFFICIENT
living spaces

HOME APPLIANCES

All Atlantida homes include state-of-the-art appliances, modern design and recognized brands. Kitchens are equipped with a dishwasher, washing machine, oven, microwave, induction hob, range hood and refrigerator.



FAUCET

For the sink, the most hygienic solution. Made of steel, embedded under the countertop and with a chrome finish faucet.

CLOSETS

All bedrooms have large lacquered built in closets. Doors and baseboards throughout the home also match the lacquered and coated finish of them.



LIGHT

At Atlantida Homes we are committed to large windows, so that you never lack light and natural ventilation. In addition, in all bedrooms a motorized blind is installed with the box embedded in the facade.



SWITCHES

We install all the necessary plugs and switches, integrated into the design of the house. All rooms have data and TV connection, and telephone connection in the living room.



KITCHEN FURNITURE

We design our kitchens to be spacious, current and functional. You will have several models to choose from, always with a perfect finish and quartz countertops.

ATLANTIDA
HOMES
Quality



SINK

All bathrooms include a contemporary design washbasin cabinet, with large drawers and chrome controls and faucet. A mirror with integrated lighting is also installed.

SANITARY WARE

Upon receiving your home you will have fully equipped bathrooms. Designer toilet and bidet, shower or bathtub with thermostatic controls and faucet... everything, regardless of the chosen finishes.



FACILITIES

We always keep in mind the use of technology at home. For this reason, we include in our homes a video intercom, pre-installation of alarm and thermostat in the living room and all bedrooms. In addition, you can add elements such as state-of-the-art home automation, lighting regulation, central vacuum or speakers integrated into the ceiling with Wi-Fi connection.



PARTITIONS

Atlantida Homes partitions are made up of a dry-wall work of gypsum board. It is a water-repellent and fire-retardant product through which high thermal and acoustic insulation is achieved.

EVERYTHING NEEDED, Included in a base price



Project study

- Urban and geometric feasibility study.
- Energy study of each home.
- Topographic survey and geotechnical study.
- Access to lot viability study (*).

Project development

- Design development and construction documents developed by Grupo Riofrío's team of architects and engineers.
- Project management of work.
- Construction administration of work.
- Health and Safety Plan and Project.
- Coordination of Safety and Health in the Work.
- Licensing

House construction

- Transport of the modules to the plot(*).
- Slab-based foundations or braced isolated footings of reinforced concrete on terrains with a 3% slope and excavation in terrains of medium consistency.
- On-site assembly (*).
- Ten linear meters of ditches and pipes for hooking the house facilities up to electricity and pumping networks, sewage system, etc.

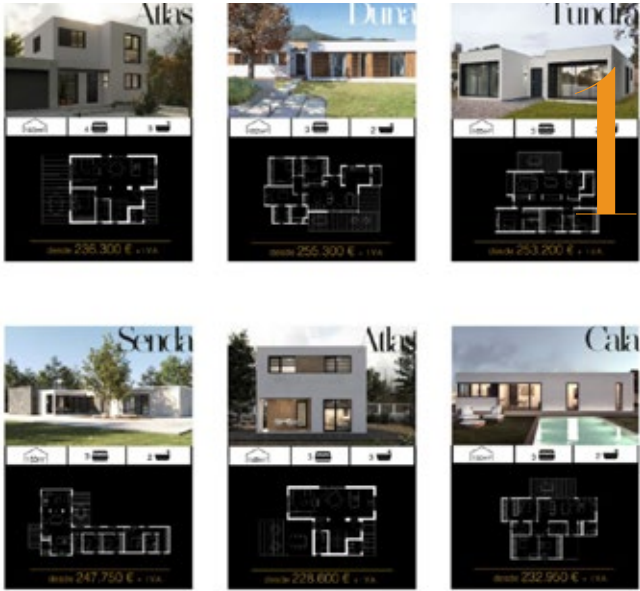
Equipment

- Aerothermal climatization with cooling and radiating floor throughout the house.
- Fully equipped and furnished kitchen with induction ceramic hob, oven, range hood, integrated microwave, washing machine, dishwasher and fridge-freezer.
- Fully equipped bathrooms.
- Built-in and lined wardrobes.
- Recessed led lighting.
- Motorized blinds in bedrooms.
- Video intercom and pre-installation of security alarm.

Warranty

- Energy efficiency certificate.
- Legal warranty according to the Building Planning Law.

(*) The budget estimations include transport by national road at a distance of up to 100 km, with on-site assembly. The rates for transport through other types of routes and at greater distances, as well as the cost of assembly from more remote locations will be specified in the final closed price after carrying out the logistics study.



Choose your house

- Tell us which of our models best suits what you are looking for.
- Ask us for help to find out what best suits your plot.

Do you already know how you want your house?

- We configure the distribution of your home with you.
- We carry out the necessary studies to ensure the viability of the modular implementation.



We develop the project

- We accompany you throughout the process to continue making decisions and defining your home.
- Project documentation is developed by our team.
- We manage the process with the town hall.

Once you have the license... We can start!

- We finalize the details of the budget.
- The construction of your home will start in factory while all the grading and utilities are done at the site.



4 months until your home is ready

- All the prefabricated units are installed on your plot and by the end of the process your new home will be turn-key.
- Apply for the First Occupation license and enjoy!

(*) Execution period for homes of up to 200m² with one floor, from the start of manufacturing. For other homes, the term will close once the project is defined.

If you decide,
we make it easy for you



Come and see us

If you need help, want more information or just want to meet us, you can come to our offices to see us and make an appointment so that we can show you some of our model homes.

We have a showroom with samples of the finishes and technical details so you can see and touch everything before deciding how you want your new home to be.

We will explain the process in a more detailed way and our technical team will be able to advise you on the house that best suits your needs and the plot on which it will be located.

In addition, you will know first-hand both the most technical details and all the possibilities that an Atlántida Home offers you.

If you want to get in touch with us, call us or email us to:

☎ 91 409 71 80

✉ hola@atlantidahomes.com



HEADQUARTERS:
C/ Pez Austral nº2
C.P. 28007
Madrid



ATLANTIDA HOMES

INDUSTRIALIZED HOUSES OF MAXIMUM
ENERGY QUALITY AND EFFICIENCY

www.atlantidahomes.com

hola@atlantidahomes.com

91 409 71 80

HEADQUARTERS:

C/ Pez Austral nº2
C.P. 28007, Madrid

